

Mr Rob Sherry  
Team Leader Compliance – Government Projects  
Department of Planning, Housing and Infrastructure  
Locked Bag 5022  
PARRAMATTA NSW 2124

7 February 2024

Ref:201208-ER\_DPHI-January 2024

Dear Rob

**RE: Sydney Metro - Sydney Metro West SSI - ER Monthly Report for January 2024**

Healthy Buildings International (HBI) submits this report to the Secretary in accordance with:

- Condition A30 (k) of the Sydney Metro West, Concept and Stage 1 SSI 10038 Approval (11 March 2021), and associated modifications (MOD 1 - 28 July 2021, MOD 2 - 3 June 2022, MOD3 – 4 July 2022, MOD 4 - 23 December 2022 and MOD 5 – 20 September 2023); and
- Condition A32(k) of the Sydney Metro West – The Bays to Sydney CBD SSI 19238057 Approval (24 August 2022).

The attached summary details the key activities undertaken by Environmental Representatives for Sydney Metro – Sydney Metro West for the month of January 2024.

Yours sincerely



Greg Byrnes  
Environmental Representative

Cc:

Sydney Metro: Matthew Marrinan, John Lerokis, Pamela Tummers, Andrew Hendy, Cath Snelgrove, Ari Stypel, Ben Armstrong, Sarah Kemp  
Contractors: Jared Lipton (AFJV), Steph Mifsud (GLC), Sally Reynolds (JCG)  
DPHI: Major Projects Portal



## Table of Contents

1	Phase B - Central Tunnelling Package .....	4
1.1	Key Construction Activities During the Period .....	4
1.2	Key Construction Activities Look Ahead.....	5
1.3	ER Inspections .....	5
1.3.1	Photos .....	6
1.4	Endorsed Document/s.....	7
1.5	Complaints .....	7
1.6	Compliance.....	7
1.6.1	Incidents .....	7
1.6.2	Non-compliance and Potential Non Compliance.....	7
1.6.3	Audits .....	7
1.7	Looking Forward – Core Focus Areas .....	7
2	Phase F – Western Tunnelling Package .....	9
2.1	Key Construction Activities During the Period .....	9
2.2	Key Construction Activities Look Ahead.....	10
2.3	ER Inspections .....	10
2.3.1	Photos .....	11
2.4	Endorsed Documents .....	13
2.5	Complaints .....	<b>Error! Bookmark not defined.</b>
2.6	Compliance.....	13
2.6.1	Incidents .....	13
2.6.2	Non-compliance.....	13
2.6.3	Audits .....	14
2.7	Looking Forward – Core Focus Areas .....	14
3	Phase G - Eastern Tunnel Package .....	15
3.4	Endorsed document/s.....	18
3.5	Complaints .....	18
3.6	Compliance.....	18
3.6.1	Incidents .....	18
3.6.2	Non-compliance.....	18
3.6.3	Audits .....	18
3.7	Looking Forward – Core Focus Areas .....	18
4	PHASE H - Westmead Utility Relocation .....	20
4.1	Key Construction Related Activities During the Period .....	20
4.1	Key Construction Activities Look Ahead.....	20



4.2	ER Inspections .....	20
4.2.1	Photos .....	20
4.3	Endorsed Document/s.....	20
4.4	Complaints .....	21
4.1	Compliance.....	21
4.1.1	Incidents .....	21
4.1.2	Non-compliance.....	21
4.1.3	Audits .....	21
4.2	Looking Forward – Core Focus Areas .....	21
5	Sydney Metro Retained Obligations and Other Activity .....	22
5.1	Key Construction Activities During the Period .....	22
5.2	Key Construction Activities Look Ahead.....	22
5.3	ER Inspections .....	22
5.3.1	Photos .....	22
5.4	Endorsed Document/s.....	22
5.5	Complaints .....	22
5.6	Compliance.....	22
5.6.1	Incidents .....	22
5.6.2	Non-compliance.....	22
5.6.3	Audits .....	22
5.7	Looking Forward – Core Focus Areas .....	<b>Error! Bookmark not defined.</b>
6	Statement of Limitations .....	23
7	Appendix A – ER Document Endorsement Records (ETP only) .....	24



## 1 PHASE B - CENTRAL TUNNELLING PACKAGE

The Environmental Representatives for Phase B of Sydney Metro West are:

- Michael Woolley
- Greg Byrnes
- Jo Robertson

Phase B – Central Tunnelling Package (CTP) is being delivered by Acciona Ferroviol Joint Venture (AFJV). Phase B of Sydney Metro West has been further broken into:

- Phase B1: Civil works
- Phase B2: Tunnelling works

The AFJV hold EPL 21610 for this Phase of works. Activities defined as Phase B2-Tunneling Works in the Staging Report for Metro West commenced during the November 2022 reporting period at Burwood North.

### 1.1 Key Construction Activities During the Period

#### The Bays

- Ongoing support activities for the two TBMs. Neither TBM was tunnelling during January as they were traversing the Five Dock caverns. Some tunnellers were operating out of Five Dock site during the reporting period.
- Ongoing construction of cross passages.
- Storage of spoil in the shed and load out of trucks.
- Ongoing operation of the Construction Water Treatment Plant; site office facilities; and works shops.

#### Five Dock

- West shaft: Completion of excavation for the shaft until after the TBMs traverse and continue tunnelling. Construction of concrete plinths for the TBM traverse.
- Traverse of the TBMs to set up for recommencement of tunnelling in early February 2024. Deliveries as required.
- East Shaft: Ongoing TBM traverse towards the Western Cavern. Maintenance of the TBMs. Ongoing Form, Reo Pour (FRP) works for the base of the shafts and preparation for TBM traverse. Ongoing use of a house on Waterview Street adjacent the eastern shaft for project offices. Ongoing ventilation. Ongoing works inside the Central Cavern.
- Cessation of the operation of the Water Treatment Plant at the east site with water being directed to the Bays WTP for treatment.
- Open day held at the Five Dock site on 4 February 2024. AFJV reported over 200 people attended the event.

#### Burwood North

- Completion of construction of the lining of the cavern roof. Completion of the concrete lining of the Nozzles at the Eastern end of the station box.
- FRP for concrete base of the station box including plinths for the TBM rails required for the TBM to traverse the station box.
- Excavation of soils and ongoing FRP for concrete hardstand of ground between the station box and Parramatta Road.
- Operation of the Water Treatment Plant.



- OOHWs relating to driveways and utilities in various areas around the site.
- South Shaft: Completion of bulk excavation from the shaft. Completion of wall support activities. Minor FRP activities to create a concrete sump in the base of the shaft.

#### **North Strathfield**

- Completion of bulk excavation of station box. Ongoing load out of remaining spoil using one excavator via the slip lane alongside Queen Street. Drilling and stressing of rock anchors; wall support with shotcrete. Ongoing detailed profiling of the base of the walls and floor. Excavation of services trenches. Ongoing water profiling and FRP lining of the Nozzles at each end of the station box.
- OOHWs for Utilities in Queen Street and other local roads.

#### **Sydney Olympic Park**

- Completion of the blinding layer on the base of the station box. Completion of the installation of services in trenches in the base of the station box.
- Completion of the removal of spoil from the station box.
- Ongoing waterproofing of the Nozzles at the eastern end of the station box and preparation for concrete FRP works to line the Nozzles.
- Project Office Operating.

#### **1.2 Key Construction Activities Look Ahead**

- Ongoing activities as described above.
- Various OOHWs (conducted under the EPL).
- Recommencement of TBM tunnelling from Five Dock.

#### **1.3 ER Inspections**

There were three ER inspections conducted on each Thursday during January 2024 commencing on 11 January after the Christmas shutdown period. Sites were inspected on an alternating basis, except for Five Dock which was inspected weekly.

##### **The Bays:**

- One action related to secondary containment of chemicals.

##### **Five Dock:**

- Two actions raised related to water and ERSED management at the western shaft site.

##### **Burwood North:**

- Nil actions raised, with concrete hardstand works noted that has reduced ERSED risks between the station box and Parramatta Road.

##### **North Strathfield**

- Nil actions raised.

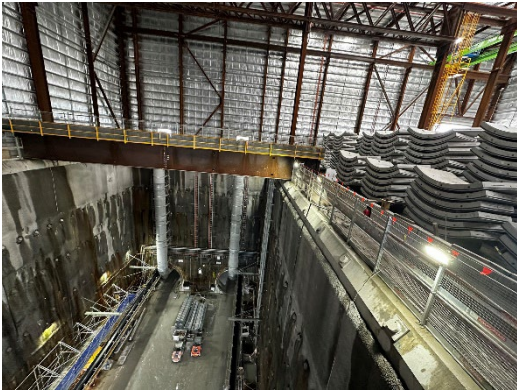
##### **Sydney Olympic Park**



- One action raised related to minor surface erosion and sedimentation in a swale drain.

AFJV have been prompt in closing out actions raised during inspections.

**1.3.1 Photos**



**Figure 1 1** The western end of the station box (The Bays).



**Figure 1 2** TBM in the Western Shaft (Five Dock).



**Figure 1 3** TBM Traverse through the Western Shaft (Five Dock).



**Figure 1 4** Blinding completed. Construction of TBM traverse plinths (Burwood North).



**Figure 1 5** Ongoing excavation and wall support South Shaft (Burwood North).



**Figure 1 6** Ongoing excavation of station box and nozzles; wall support (North Strathfield).



Figure 1.7 Removal of remaining spoil. Works on the Nozzles. (North Strathfield)



Figure 1.8 Waterproof membrane being installed in the nozzles (SOP).

#### 1.4 Endorsed Document/s

No Plans or other documents were endorsed by the ER during the reporting period.

#### 1.5 Complaints

Based on weekly Sydney Metro Complaint Registers provided for January 2023, there were 9 complaints reported during the month, with one of the reported complaints identified as not related to AFJV activities.

Six complaints were related to Five Dock from one resident regarding: OOHWs noise (2); water pooling in street; reversing of trucks onto site; noise from a road plate and one complaint which one was not project related.

Three complaints were received at North Strathfield relating to: noise from OOHWs; quality of footpath and road restoration (2). One of the complaints also included concerns regarding dust.

#### 1.6 Compliance

##### 1.6.1 Incidents

No Incidents as defined in the Infrastructure Approval were reported by AFJV or Sydney Metro during the reporting period. One incident was reported under the Sydney Metro Incident Reporting procedure relating to spillage of untreated water from water storage tanks at North Strathfield. The incident occurred while pumping water that had accumulated in the station box from storage tanks to Vacuum Trucks.

##### 1.6.2 Non-compliance and Potential Non Compliance

No Non-Compliance Reports were provided to the ER during the reporting period and no reports of non-compliances were made to the ER by AFJV or Sydney Metro.

##### 1.6.3 Audits

The fourth Independent Environmental Audit on the Sydney Metro West, Concept and Stage 1 SSI 10038 Approval is planned for late February 2024.

#### 1.7 Looking Forward – Core Focus Areas

- Dust generation at all sites during dry weather.



HBI Healthy Buildings International Pty Ltd

- Noise and Vibration management at Five Dock and Burwood North, including 24 hour operation of the TBMs from Five Dock.
- Traffic Management at Five Dock.





## 2 PHASE F – WESTERN TUNNELLING PACKAGE

The Environmental Representatives for Phase F of Sydney Metro West are:

- Greg Byrnes
- Swathi Gowda
- Mike Woolley
- Maulik Bapodara

Phase F – Western Tunnelling Package (WTP) is being delivered by Gamuda Australia Laing O'Rourke Consortium (GLC).

GLC are constructing this Phase of Sydney metro West under EPL 21676.

### 2.1 Key Construction Activities During the Period

During January 2023, construction activities continued at all WTP sites. The following activities were undertaken at the Sydney Olympic Park (SOP), Westmead, Parramatta, Rosehill, Clyde Dive and Clyde MSF sites:

#### SOP

- Nozzle invert construction
- Caverns waterproof membrane installation

#### Westmead

- Station box excavation, rock bolts and shotcrete.
- Road Header excavation of cross over caverns at the eastern end and tunnel stub at the western end of the Station Box (24hrs/5days)
- Removal of spoil from the Station Box, tunnel stub and cavern excavation via kibble and gantry crane inside the acoustic shed.
- The excavated material is pre classified and is being loaded out during day works
- Water Treatment is now operational and discharging off site via the EPL discharge point.

#### Parramatta

- Bentonite Plant operation with de-sander material being removed from site
- Diaphragm wall (D-Wall) excavation with two cutters and one Grab with spoil being transferred to MSF (OOHW)
- Water Treatment Plant commissioning
- Excavation of the eastern end of the Station Box has commenced with the spoil going to the Clyde MSF site.

#### Clyde Dive

- Arrival and departure tunnelling with Road header from the tunnel shaft.
- Horizontal tunnelling with Road header from the tunnel shaft towards the Dive excavation
- Spoil from the tunnel excavations is being transferred to the Clyde MSF for reuse
- Clyde dive excavation, shotcreting and soil nail drilling. Rock hammer and excavator are now being used.

#### Rosehill



- TBM 1 and 2 continue to tunnel excavation with spoil being transferred to the spoil shed via the spoil conveyor
- Water treatment plant operation and receiving water from Clyde Dive and Clyde MSF. WTP waste is being stockpiled and classified on site prior to disposal
- Segment delivery is continuing and the segment shed is being constructed
- Grout Plant operation

### Clyde MSF

- Water main and utilities trenching adjacent to the M4 and along Duck Creek
- Unwin Street diversion construction including piling and bridge works
- Rail bridge works, including piling, pylon and bridge deck construction over Duck and A'Becketts Creeks
- Road diversion and flood detention civil works adjacent to the RTA Facade.
- Duck Creek and A'Becketts Creek low flow diversion channel excavation and rock armour placement.
- Spoil management including stockpiling, segregation, classification and movement around site. This includes Acid Sulfate soil treatment
- Earthworks, including back filling of the Parramatta Speedway site
- Fuel depot UST removal and remediation

### 2.2 Key Construction Activities Look Ahead

The key construction activities planned for February 2024 are similar to those listed in Section 3.1 With the addition of the following:

- Duck and A'Becketts Creek low flow channel excavations
- Design and construction of temporary crossing of A'Becketts Creek
- Excavation of the Parramatta Station Box outside and spoil transfer to Clyde MSF site outside of standard construction hours.

### 2.3 ER Inspections

Four ER inspections were conducted in January 2024 (10/1/2024, 17/1/2024, 24/1/2024 and 31/1/2024). Currently, the sites are divided into two groups and visited fortnightly. The two groups are:

- Parramatta, Westmead and SOP
- Clyde Dive, Clyde MSF and Rosehill

In total of 206.4 mm (Parramatta BOM) of rain fell during January 2024, compared to a monthly average of 89.4mm. Heavy rainfall was recorded on the 15, 16 and 18 January 2024, with 75mm, 47mm and 49mm falling, respectively. In total four actions were raised across the WTP in January. All actions were raised at the Clyde MSF site with three actions for inadequate erosion and sediment controls and one for spoil management. The actions and key issues raised at the inspections were:

- **Rosehill** – The Rosehill site is being managed well with focus on spoil management. No actions were raised during January. Opportunities for improvement were raised for the management of waste from the WTP.
- **Clyde MSF** - This site currently presents the highest environmental risk for GLC with sediment controls and spoil management being the key focus area for this site. During an ER inspection, four actions were raised for inadequate erosion and sediment controls and spoil management. Opportunities for improvement were raised for erosion and sediment control maintenance and review controls at the site access points.
- **Parramatta** – The Parramatta site is being managed well with no actions raised. The excavation of the station box and the transfer of spoil to the Clyde MSF site presents an elevated risk for GLC and should be a key focus area for this site.



- **Westmead** – The Westmead site is being managed well with no actions raised during January.
- **Clyde Dive** – This site is being managed well with no actions raised during January.
- **SOP** – The SOP site is being managed well with no actions raised.

**2.3.1 Photos**



Figure 2.1: Westmead Site –Station Box excavation



Figure 2.2: Westmead site – Hawkesbury Road Repairs completed



Figure 2.3: Parramatta Site – Station Box excavation



Figure 2.4: Parramatta site – Bentonite Plant and de-sander material



Figure 2.5: Clyde Dive site – Clyde Dive excavation continuing with rock hammer



Figure 2.6: Clyde Dive site – sediment controls



Figure 2.7: Rosehill Site – Segment Shed



Figure 2.10: Rosehill Site – WTP waste stockpile



Figure 2.11: Clyde MSF Site – UST removal and remediation



Figure 2.12 – Clyde MSF Site – A'Becketts Creek low flow construction



Figure 2.13: Clyde MSF Site – Spoil stockpile controls following rain events



Figure 2.14: Clyde MSF Site – Wheel wash with hose cleaning tyres



Figure 2.15: SOP Site – Caverns waterproof membrane installation



Figure 2.16: SOP Site – Station Box

## 2.4 Endorsed Documents

GLC are continuing to undertake an annual review of their environmental management plans. This involves incorporating the MOD 5 requirements and adding SOP as a construction site. The following plans were endorsed by the ER during the reporting period:

- Sydney Metro West – Western Tunnelling Package: Air Quality Management Plan (Rev G)
- Sydney Metro West – Western Tunnelling Package: Flora and Fauna Management Plan (Rev H)

## 2.5 Complaints

Four complaints were provided to the ER for January 2024. Following an investigation, one of these complaints was not related to the Sydney Metro project. The remaining complaints are summarised below:

- **Westmead** – Two complaints: The (11/1/2024) complaint was related to property damage and cracking. Following an investigation of the vibration and ground movement data not exceedances of the cosmetic damage criteria was recorded. The (18/01/2024) complaint was related to noise from heavy vehicles along Hawkesbury Road during standard construction hours. The ER has witnessed an increase in noise as the spoil haulage trucks accelerate after leaving the site gate. This road is a busy road and part of the approved haulage route.
- **Clyde MSF**- One complaint. The (15/1/2024) complaint was related to a blocked stormwater drain on Marta Street just south of the Clyde MSF site. Following an investigation the stormwater pit sediment controls were blocked with debris from recent rainfall. Maintenance was undertaken by GLC and water is now flowing through the controls.

## 2.6 Compliance

### 2.6.1 Incidents

No incidents considered to represent Incidents as defined under the Project Approval were reported to or observed by the ER during the reporting period.

### 2.6.2 Non-compliance

No Non-Compliance Reports were provided to the ER or raised by the ER during the reporting period.



### **2.6.3 Audits**

No Independent Environmental Auditors occurred on Sydney Metro West.

### **2.7 Looking Forward – Core Focus Areas**

GLC are managing their environmental risk and compliance adequately. Currently, the Clyde MSF site presents the highest environmental risk due to its spoil management, creek works and multiple site access points.

The core focus areas for the coming month are:

- Erosion and sediment controls at the Clyde MSF sites
- The diversion of Duck and A'Becketts Creek is continuing. This work involves creating a new low flow channel linked with rock and backfilling the original creek alignment.
- Parramatta Station Box excavation outside normal construction hours (24 hours a day). Spoil is being transferred to Clyde Dive during OOH and Nepean Business Park during the day. This presents an elevated noise, traffic, dust and mud tracking risk to the project.



### **3 PHASE G - EASTERN TUNNEL PACKAGE**

The Sydney Metro West Eastern Tunnel Package is Stage 2 of the Sydney Metro West CSSI and is described as major civil construction works between The Bays and Sydney CBD, including station excavation at Pyrmont and Hunter Street and tunnel excavation between the Bays and Hunter Street. Stage 2 (SSI 19238057) was approved on the 24 August 2022.

The Environmental Representatives for the Sydney Metro West Eastern Tunnel Package are:

- Michael Woolley
- Maulik Bapodara
- Greg Byrnes
- Jo Robertson

The Eastern Tunnelling Package (ETP) is being delivered by John Holland CPB Ghella Joint Venture (JCG) with the contract being awarded in November 2022. Sydney Metro notified DPHI that the date of commencement of construction was 17 March 2023. JCG have received Environmental Protection Licence (EPL 21784) for the project.

#### **3.1 Key Construction Related Activities During the Period**

Works conducted during the reporting period included:

##### **Project Wide:**

- Pre-Construction Surveys
- Drilling of monitoring and geotechnical investigation boreholes
- CCTV investigations of sewer lines.

##### **Pyrmont East:**

- Segregation and load out of spoil/wastes.
- Use of the diesel-powered tower crane established on site during a previous reporting period
- Ongoing construction of boundary retaining walls including stabilisation of boundary footpaths and removal of precast panels from the former site building
- Ongoing construction of the steel platform columns
- Excavation of some areas as required for works
- Establishment of a new ancillary facility in the parking lane on the south side of Union Street for site sheds after relevant approvals had been obtained.

##### **Pyrmont West:**

- Ongoing removal of concrete slabs, columns and beams in the former basement carpark structure
- Ongoing installation of wall support such as rock bolts, anchors and piles
- Excavation of ground to allow retaining wall to be built along Paternoster Row. Construction of the retaining walls along Paternoster Row and Pyrmont Bridge Road
- Load out of spoil wastes.
- Creation of a hardstand area on driveway access to Pyrmont Bridge Road

##### **Hunter Street West:**

- Hazardous Materials assessments and removal
- Ongoing soft strip of buildings to be demolished – mostly completed
- Near completion of the demolition of some relatively smaller buildings on George Street.
- Ongoing installation of scaffolding
- Ongoing use of the basement load out zone for loading trucks and removal of demolition wastes through driveway to Hunter Street.

##### **Hunter Street East:**



- Activities inside the Bligh Street acoustic shed including ongoing excavation of the station cavern and various adits, turnback's, declines and ventilation shafts; stockpiling and load out of spoil. Use of air ventilation systems and other tunnelling support activities.
- Hazardous Materials assessments and removal
- Ongoing soft strip of buildings to be demolished
- Ongoing installation of scaffolding
- Ongoing works to support planned hard demolition activities including construction of columns to support some building elements
- Works to set up the load out area at 28 O'Connell Street
- Hoarding installation around the Raddison Hotel, and Pangas House, Hunter Street

#### **The Bays:**

- Ongoing use of site offices
- Water treatment using the temporary WTP
- Ongoing works for the assembly of the Construction WTP
- Ongoing cladding of the Segment Shed building
- Installation of foot bridge over the SE corner of the station box
- Various earthworks to establish site levels, particularly within the former WCX areas
- FRP works for the slurry plant; haul road and laydown areas
- Works within the station box to prepare for launch of the TBMs including niche excavation; and FRP for tunnelling launch supports.

### **3.2 Key Construction Activities Look Ahead**

The following works are planned in February 2024:

- Ongoing activities as described above
- Utility investigations and relocations
- Further site establishment works at all sites
- Rock hammering of the Pymont shafts

### **3.3 ER Inspections**

Three ER inspections were conducted during the reporting period on each Tuesday of January commencing 16<sup>th</sup> January, after the Christmas shutdown period that commenced on 22 December. Two actions were raised during the month:

- Provision of ERSED controls in the loading dock area at 28 Oconnell Street, Hunter East;
- Provision of secondary containment for drums stored at the Bays near the former WCX area;
- Stabilisation of the swale drain and batter slope adjacent the WBPS at the Bays; and
- Provision of secondary containment for drums stored at Pymont East.

Various observations were made in relation to noise from the diesel engine on the Tower Crane at Pymont East, particularly after a complaint was received for this plant. Monitoring was undertaken of the tower crane in late January that was attended by the AA. JCG has investigated and implemented mitigation and their noise consultants are updating the Pymont DNVIS.

JCG were observed to be responsive to ER feedback during inspections.





### 3.3.1 Photos



Figure 3.1 Pyrmont East: Profiling of sandstone wall beneath retaining wall.



Figure 3.2 Pyrmont East: Ongoing retaining works around the boundary of the site



Figure 3.3 Pyrmont West: Carpark basement columns, slabs and beams removed.



Figure 3.4 Pyrmont West: Construction of retaining wall along Paternoster Row and Pyrmont Bridge Road.



Figure 3.5 Hunter St West: Ongoing demolition on George Street



Figure 3.6 Radisson Hotel: Construction of hoarding as a safety precaution.



Figure 3.7 The Bays: Cladding being placed on the frame of the Segment Shed

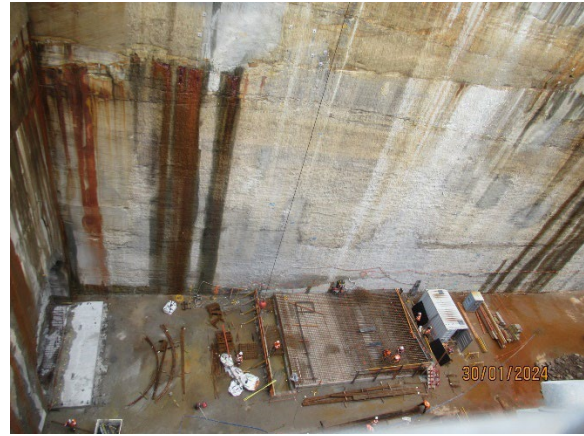


Figure 3.8 The Bays: TBM launch support structures being constructed in the base of the station box.

### 3.4 Endorsed document/s

There was one document signed by the ER during the reporting period under Condition A23:

- Minor Ancillary Application - Union Street Pymont East (Rev C)

The document was provided to outline an assessment by AFJV to assist the ER determine whether requirements of Condition A23 had been met. An updated CPASs (reviewed and approved by DPHI) and a CTMP (reviewed and approved by CJP) were developed by JCG to ensure the facility had appropriate approvals in place and were provided to the ER as part of the assessment under Condition A23.

In accordance with CoA A32(d)iii the written statements endorsing documents identified in A14, A21, C1, C5 and C14 are provided in Appendix A (if relevant).

### 3.5 Complaints

Three complaints related to ETP were reported in a summary of complaints for January 2024 for Metro West. All of the complaints related to noise and in one case vibration from the Pymont sites. One complaint related to the Tower Crane at Pymont East; one from noise at Pymont East during standard construction hours; and the third relating to daytime noise from Pymont West.

### 3.6 Compliance

#### 3.6.1 Incidents

No incidents considered to represent Incidents as defined under the Project Approval were reported to or observed by the ER during the reporting period.

#### 3.6.2 Non-compliance

No non compliances were reported by JCG or Sydney Metro for the reporting period and none were observed by the ER.

#### 3.6.3 Audits

There was no IEA or internal audits conducted during the reporting period. An IEA is planned for late February 2024.

### 3.7 Looking Forward – Core Focus Areas

In the next reporting period, the ER Team will be focused on:



HBI

Healthy Buildings International Pty Ltd

- General monitoring of construction activities; including site establishment works at the Bays
- Noise and dust associated with the ongoing hard demolition activities at Pymont West; Pymont East and Hunter Street West
- Noise associated with excavation of the shafts at the Pymont sites
- Potential for tracking of dirt at the various demolition sites and at the Bays



## 4 PHASE H - WESTMEAD UTILITY RELOCATION

The Sydney Metro West Phase H – Westmead Telstra and Jemna Gas Relocation involves the installation of new utility services around the new Sydney Metro Station at Westmead via Hawkesbury, Bailey and Hassell Streets.

The Environmental Representatives for the Sydney Metro West Eastern Tunnel Package are:

- Greg Byrnes
- Michael Woolley
- Maulik Bapodara

The Sydney Metro West Phase H – Westmead Telstra and Jemna Gas Relocation is being delivered by Quickway with the contract being awarded in August 2023.

No EPL will be required for this phase of Sydney metro West.

### 4.1 Key Construction Related Activities During the Period

Construction works included:

- Trenching and conduit install on Bailey and Hassell streets
- Silverwater Compound operation
- Traffic diversions

### 4.1 Key Construction Activities Look Ahead

Trenching and conduit installation, including associated traffic changes.

### 4.2 ER Inspections

One ER inspections was completed during the reporting period. No actions were raised, however, the cleaning of the road at the end of each shift was discussed during the inspection.

#### 4.2.1 Photos



Figure 4.1: Westmead Utility Works - Bailey Street following conduit installation



Figure 4.2 Westmead Utility Works: Noise blanket gaps during day works.

### 4.3 Endorsed Document/s

No documents were endorsed by the ER during the reporting period.



#### **4.4 Complaints**

No complaints were provided to the ER for January 2024 for the Westmead Utility Relocation Works.

#### **4.1 Compliance**

##### **4.1.1 Incidents**

No incidents considered to represent Incidents as defined under the Project Approval were reported to or observed by the ER during the reporting period.

##### **4.1.2 Non-compliance**

No Non-Compliance Reports were provided to the ER or raised by the ER during the reporting period.

##### **4.1.3 Audits**

No audits were conducted during the reporting period on Phase H.

#### **4.2 Looking Forward – Core Focus Areas**

The core focus areas for the coming month are:

- Work outside standard construction hours
- Road cleaning at the end of each shift.



## **5 SYDNEY METRO RETAINED OBLIGATIONS AND OTHER ACTIVITY**

The Environmental Representatives for the Sydney Metro Retained Obligations and other Activities are:

- Jo Robertson
- Greg Byrnes

The Sydney Metro Retained Obligations and other Activities is being delivered by Sydney Metro with various sub-contractors delivering the works. These works do not require an EPL.

### **5.1 Key Construction Activities During the Period**

The ER is not aware for other Sydney Metro managed construction activities during the period.

### **5.2 Key Construction Activities Look Ahead**

The ER is not aware for other Sydney Metro managed construction activities during the period.

### **5.3 ER Inspections**

There were no ER inspections of this work during the reporting period.

#### **5.3.1 Photos**

None

### **5.4 Endorsed Document/s**

No Sydney Metro documents were endorsed during the reporting period.

### **5.5 Complaints**

No complaints have been reported to the ER in relation to the investigations previously conducted for Sydney Metro.

### **5.6 Compliance**

#### **5.6.1 Incidents**

No incidents have been reported to the ER in relation to the investigations previously conducted for Sydney Metro.

#### **5.6.2 Non-compliance**

No non compliances have been reported to the ER in relation to the investigations previously conducted for Sydney Metro.

#### **5.6.3 Audits**

No audits were conducted during the reporting period on this package or works.



## **6 STATEMENT OF LIMITATIONS**

Healthy Buildings International (HBI) has prepared this report in accordance with the requirements of Condition A30(k) of the Sydney Metro West, Concept and Stage 1 SSI 10038 Approval (11 March 2021), and Condition A32(k) of the Sydney Metro West – The Bays to Sydney CBD SSI 19238057 Approval (24 August 2022).

The report is for the sole purposes of Department of Planning, Housing and Infrastructure (DPHI) and Sydney Metro. It has been prepared based on generally accepted practices and standards at the time it was prepared. No other warranty, expressed or implied, is made as to the professional advice included in this Report. This report did not assess any aspects relating to safety.

Where the Report indicates that information has been provided to HBI by third parties, HBI assumes no liability for any inaccuracies in or omissions to that information.

This Report was prepared based on the conditions encountered and information reviewed at this time. HBI disclaims responsibility for any changes that may have occurred after this time.

This Report should be read in full. No responsibility is accepted for use of any part of this report in any other context or for any other purpose or by third parties. This Report does not purport to give legal advice. Legal advice can only be given by qualified legal practitioners.

Except as required by law, no third party may use or rely on this Report unless otherwise agreed by HBI in writing. Except as specifically stated in this section, HBI does not authorise the use or findings of this Report by any third party

To the extent permitted by law, HBI expressly disclaims and excludes liability for any loss, damage, cost or expenses suffered by any third party relating to or resulting from the use of, or reliance on, any information contained in this Report. HBI does not admit that any action, liability or claim may exist or be available to any third party.



HBI Healthy Buildings International Pty Ltd

## **7 APPENDIX A – ER DOCUMENT ENDORSEMENT RECORDS (ETP ONLY)**