



Platform level almost ready for services

Crows Nest Station nears completion

February 2024

Crows Nest Station is getting closer to completion with interior fit-out now 98 per cent complete.

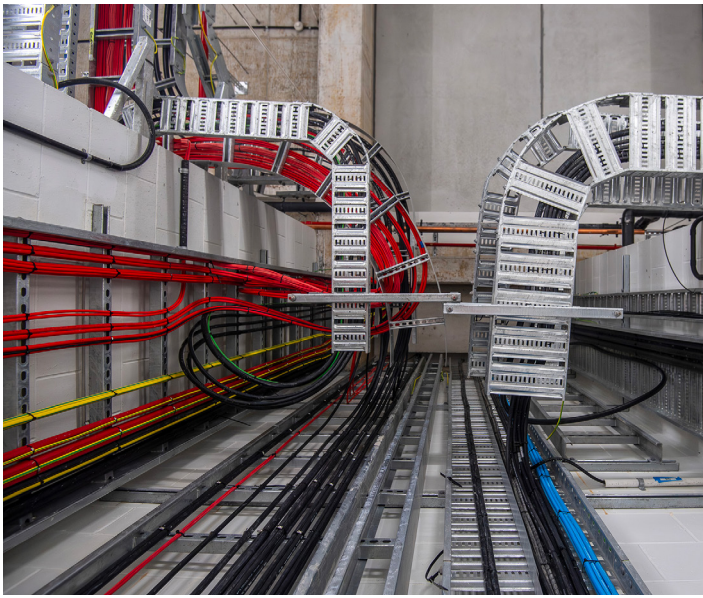
Signage, public seating, information panels, opal gates and interior cladding is all in place on the platform and concourse levels. Installation of public art is underway at the Pacific Highway station entrance and has been completed at the Clarke Street entrance.

All four lifts and nine escalators connecting the two station entrances to the underground concourse and platform levels are installed and are being tested and commissioned ready to welcome passengers this year.

Exterior works are progressing with the brick façade fully complete on Oxley Street, and almost complete along Clarke Lane and Pacific Highway at Site A. At Site C, the over station building structure has been completed and the first station entrance awning was lifted into place at Clarke Street in December.

Sydney Metro is Australia's biggest public transport project

Services started in May 2019 in the city's North West with a train every four minutes in the peak. Metro rail will be extended into the CBD in 2024, with new metro railway stations at Crows Nest, Victoria Cross, Barangaroo, Martin Place, Gadigal and Waterloo, and new metro platforms at Central, and then onto Bankstown in 2025.



220km of electrical cabling has been installed to date



Installation of entrance awning at Clarke Street



Completed brick façade work at Oxley Street and Pacific Highway



Platform lifts installed and commissioned



Concourse level nearing completion

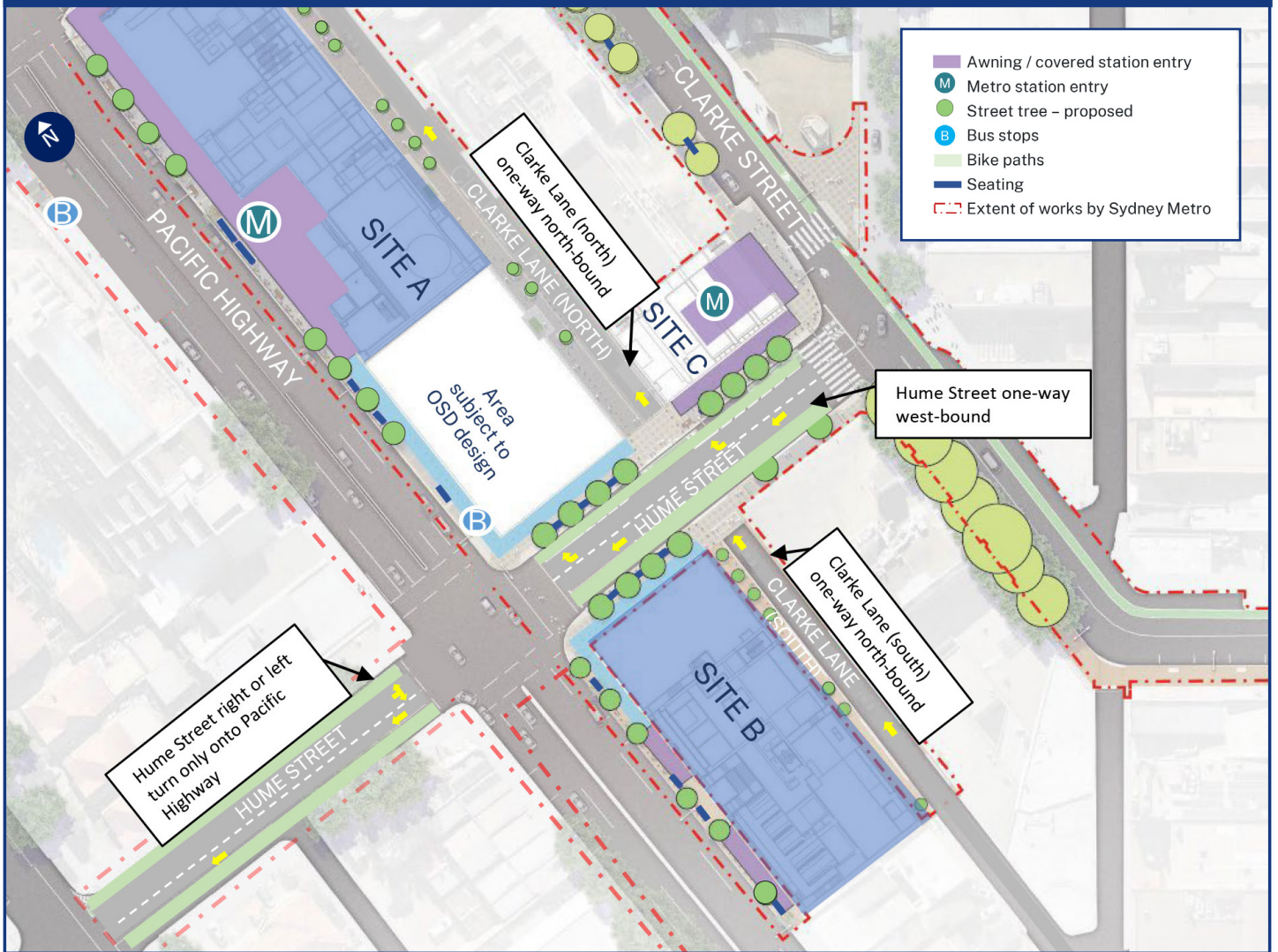
Precinct work

Work to upgrade the precinct surrounding Crows Nest Station is currently underway and is expected to be complete by mid-2024. Key features of the upgrade include:

- new pedestrian crossings on Hume and Clarke streets and Pacific Highway
- new kiss and ride and taxi bays on Oxley and Clarke streets
- new Hume Street bi-directional separated cycle link from Clarke to Nicholson streets
- upgraded Hume Street and Oxley Street traffic signals with increased pedestrian capacity and cycle crossing at Hume Street
- upgraded footpaths, kerbs and gutters surrounding the station on Clarke, Hume and Oxley streets, Pacific Highway and Clarke Lane
- new street tree planting, lighting, and street furniture
- road resurfacing on Clarke, Hume and Oxley streets, Pacific Highway and Clarke Lane.



Vehicle access map (changes from mid-2024)



Remaining precinct work

Activity	Feb	Mar	April	May
Utility upgrade work (Clarke, Hume and Oxley streets, Clarke Lane, and Pacific Highway)	● ●	●	●	● ●
Footpath, kerb, and gutter upgrades (Clarke Street, Oxley Street (southern side) Pacific Highway (eastern side) and Clarke Lane)	●	●	●	● ●
Traffic control signal upgrades (Oxley Street and Hume Street intersections on Pacific Highway)	●	●	●	● ●
Hume Street cycle lane construction	● ●	● ●	● ●	● ●
Installation of street furniture and landscaping	●	●	●	● ●
Road re-surfacing (Clarke, Hume and Oxley streets, Clarke Lane, and Pacific Highway)		● ●	● ●	● ●
Re-opening of Clarke Lane and Hume Street roadways				● ●

● Day work ● Night work

Remaining station construction activities which will also continue during this time include crane use, deliveries and concrete pours, station fit-out and façade works.



A W Edwards four Community Grant recipients with their funding

A W Edwards in the community

In January the A W Edwards Crows Nest Station team announced the recipients of their Community Grant Program.

The Program was established to support community-initiated projects, events, or activities within close proximity to Crows Nest Station that contribute to community wellbeing, prosperity, or sustainability.

Four projects were selected, each aiming to make positive impacts in either the arts, culture, sustainability, education, health and community services.

One recipient Mary's House Services, a not-for-profit organisation, helping women and children escaping domestic and family violence received funding to purchase two adult and two child defibrillators.

The team will continue to engage with these organisations as they deliver their projects.

Since commencing construction at Crows Nest Station, A W Edwards has contributed over more than 100 hours and \$40,000 to the local community through a combination of sponsorship, donations and other in-kind support and grant funding.



A W Edwards Crows Nest Station team cleaning up the local streets



A W Edwards IT equipment donation to Taldumande Youth Services



Pacific Highway entrance escalators

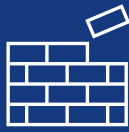


Clarke Street entrance escalators

Crows Nest construction facts



Since January 2020, 5,622 workers have worked over 1.2 million hours



126,000 bricks are being hand laid to achieve the unique exterior wall design



More than 34,540 cubic metres of concrete poured to date – enough to fill 9.5 Olympic swimming pools



167 prestressed precast concrete beams weighing up to 70 tonne each have been installed to support each floor of the station



11,360 tonnes of structural steel have been used to reinforce concrete structures such as floors, walls, columns, and lift shafts. That's enough steel to build one fifth of the Sydney Harbour Bridge



More than 650 tonnes of construction waste have been recycled - equivalent to the weight of approximately 100 African elephants!

Contact us

Thank you for your cooperation and understanding while we complete this essential work.

If you have any questions about Crows Nest Station, please call 1800 171 386 (24-hour community information line) and ask for the Crows Nest Station team or email crowsnestmetrostation@transport.nsw.gov.au



Translating and interpreting service

If you need help understanding this information, please contact the Translating and Interpreting Service on 131 450 and ask them to call us on 1800 171 386.

Have your say

Please send your feedback regarding Crows Nest Station site by scanning the QR code.

